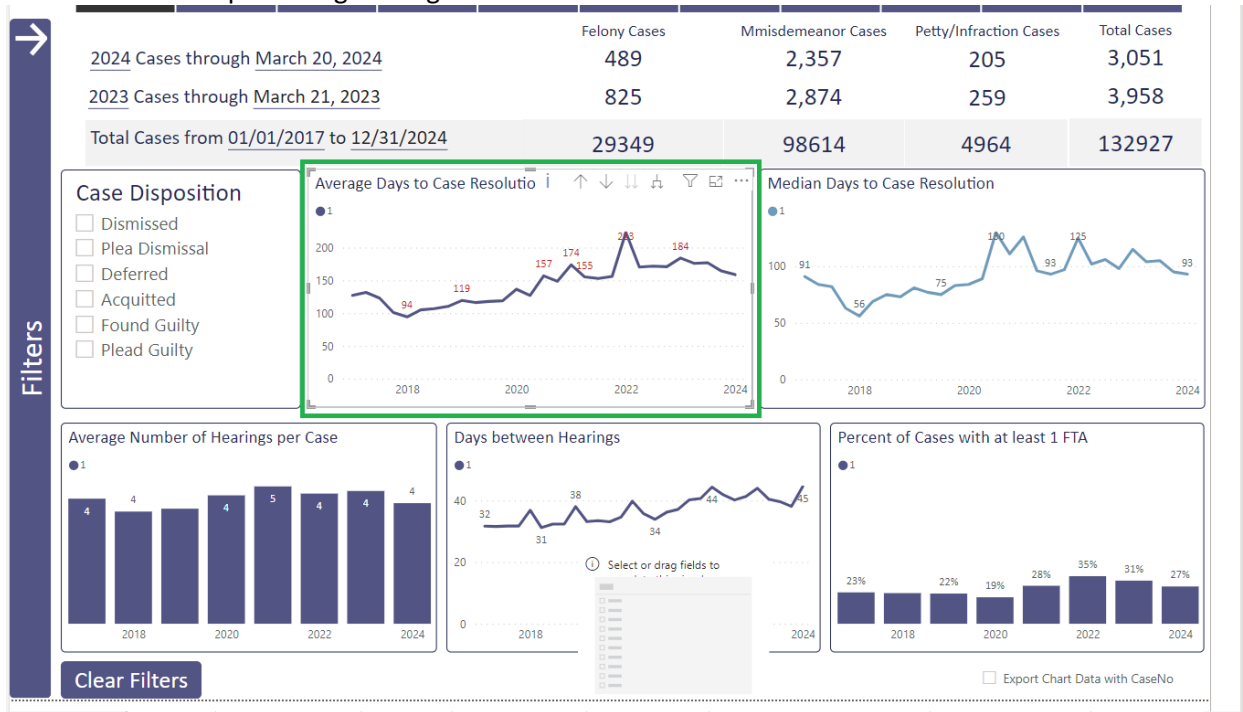


CDAC has updated the Internal Dashboard report, with some of the major changes outlined below.

1. Percentage changes for key metrics are added. For instance, the "Average Days to Case Resolution" chart show changes compared to the previous year. If the current value is 15% above or below last year's, it's highlighted in red for quick comparison. The tooltip also displays the actual percentage change.



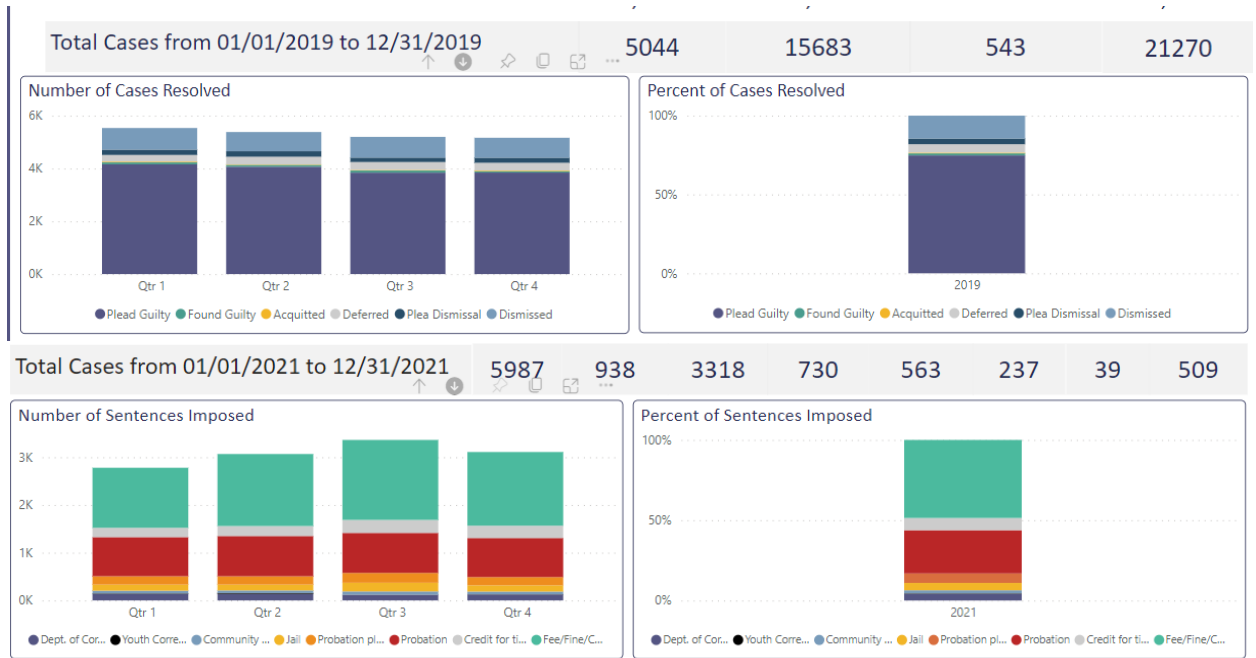
2. Introduced date slicers on relevant pages, replacing year slicers where applicable.



3. Cumulative section now dynamically updates to reflect total cases based on applied filters.

	Fine/Restitution	Time Served	Probation	Probation/Jail	Jail	Comm. Corr.	Youth Corr.	Prison
2024 Cases through March 5, 2024	359	75	382	34	69	5	4	24
2023 Cases through March 6, 2023	214	91	392	47	81	26	0	60
Total Cases from 01/01/2017 to 12/31/2024	14666	2003	19294	3177	3551	1741	243	2337

- Drill-down functionality for the "Number/Percent of Cases Resolved" graphs on the Case Resolution page and the "Number/Percent of Sentences Imposed" graphs on the Sentencing page is implemented, allowing users to navigate to quarterly data.



- The left-hand filter bar turns to black when filters are applied, matching the behavior of the top filters. Now it's easier to see when filters are active.

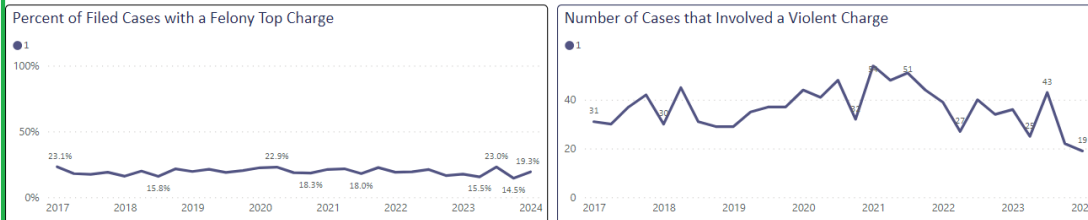
Charging and Filing

1/1/2017 12/31/2024

Compare by:

All Cases	Defendant Gender	Defendant Age	Defendant Race/Ethnicity	Defendant Criminal History	Charge Level	Charge Type	VRA Case	Violent Offense	DV Case	Judge
2024 cases through March 20, 2024					Felony Cases	Misdemeanor Cases	Petty/Infraction Cases	Total Cases		
					91	321	59	471		
2023 cases through March 21, 2023					118	535	59	712		
Total cases from 01/01/2017 to 12/31/2024					5206	19710	1959	26875		

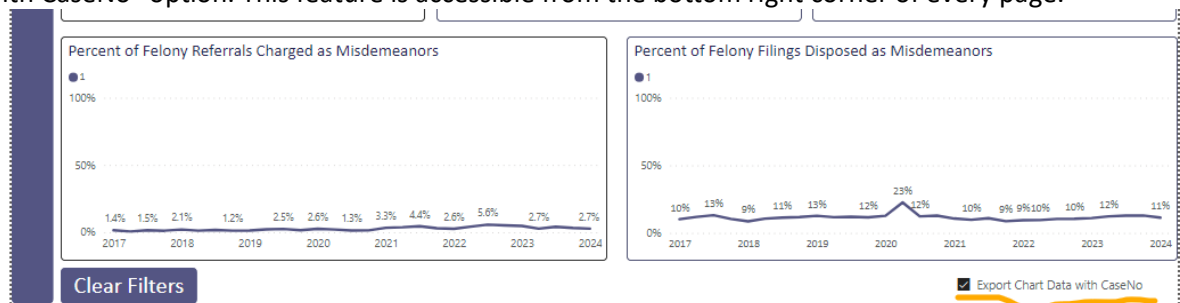
Filters



Clear Filters

Export Chart Data with CaseNo

6. Now, users can export chart data, including Case Numbers, by enabling the "Export Chart Data with CaseNo" option. This feature is accessible from the bottom right corner of every page.



Clear Filters

Export Chart Data with CaseNo

Once selected, users can utilize the "Export Data" feature on any chart to obtain filtered data along with Case Numbers. Comprehensive instructions can be found in the attached PDF file.

7. Hover-over functionality has been added to display the total number of cases for charts that present percentile data.

